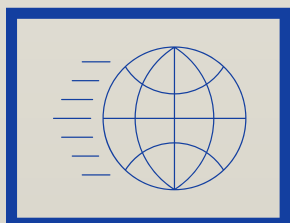


CHOOSING THE RIGHT INTEGRATION SOLUTION

www.1Logtech.com



1Logtech





Choosing The Right Partner

Introduction

This document provides a short, simple survey of products suitable for supply chain and logistics integration needs. Use this document to identify product strengths and weaknesses and determine the best fit for your needs.

Insights not Fluff

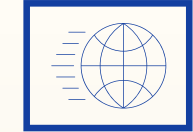
1Logtech was founded by transportation and integration veterans. This document is based on our experiences in industry leading integration products and research. Yes, we used AI to gather and format the findings - you may be surprised to learn how closely AI matched our industry knowledge.

1Logtech was founded on the transformative idea that integrating carriers and partners should be simple and not require programming.



Product Comparison

The next section is a comparative assessment product capability and contract terms and concludes with key takeaways.



Logistics Integration Comparison Matrix

Category	Legacy EDI	Middleware / ESB / APIM	iPaaS	Network Platforms
Ease of Use / Talent	Skilled resources required. Finding Talent may be difficult due to specialists retiring	Skilled Integration engineers & administrators required. Skills not directly transferable between products	User Interface simplifies some work. Coding knowledge is assumed and required for non-trivial integrations	Provider manages connections. Tickets are used to request changes or troubleshoot issues.
Strengths	Standardized messages (204, 214, 210, etc.). Widely used.	Multi-system orchestration (ERP ↔ TMS ↔ WMS). Secure and comprehensive	Includes multiple types of integration (API, EDI, events). Typically faster than Middleware	Carrier coverage, visibility and dashboards
Limitations	Point-to-point, partner-by-partner; batch not real-time	Heavy lift to build, test, promote. Point-to-point integrations. Slow to change	External integrations require partner buy-in and test. Vendors do not offer logistics connectors.	Limited to carriers in network. No visibility to the internal process or logs. Customizations not available
Deployment Options	On-prem/VAN; managed services	On-prem/private cloud; hybrid	Cloud-native with on-prem agents	Cloud SaaS-only
Typical Completion Time	2–8+ weeks per carrier/partner	4–12+ weeks complex flows	Days–2 weeks; weeks for rollout	Immediate for connected carriers

Logistics Integration Comparison Matrix

Category	Legacy EDI	Middleware / ESB	iPaaS	Network Platforms
Pricing	Per-character / document / mailbox, setup fees and services fees	Per-core / VM. Per message / endpoint. Services additional. Cloud / Hosting fees additional	Subscription (includes connectors and flows). Per message / core. Cloud / Hosting fees included	Annual contract; volume-based tiered pricing. Upcharges for additional features
Monitoring / SLA	Mailbox SLAs; limited visibility	Dashboards custom; requires staff to monitor	Built-in dashboards, alerting. SLA for up-time set by contract	Centralized dashboards, strong SLA reporting
Scalability	Rigid; scales linearly	Flexible but infrastructure-heavy	Elastic scaling; multi-protocol	Network managed by vendor, onboarding controlled by vendor. Limited customization
Document Coverage	Strong for documents, i.e. 204, 210, 214, 990. Rating/eBOL/POD/Weight weaker	Supports large number of protocols via custom build	Typically has EDI document support. System connectors included. Logistics APIs may not be out-of-the-box	Strong for status, POD, eBOL.Upcharge for tender / invoice. AI-powered features are add-on

*Core is a vendor-defined term used to specify service size. VM stands for Virtual Machine.



Key Takeaways

Legacy EDI

Best for traditional transactional documents (tender, invoice, status).
Weak on rating, eBOL, documents (POD, weight).

Middleware ESB

Flexible and heavy;
Logistics is custom build.
All integrations are point-to-point and must be maintained. Version upgrades can be costly in time and resources

iPaaS

Fast and flexible;
prebuilt templates covers most EDI flows;
carrier adapters are missing extending the time to connect carriers.
Integrations must be maintained

Network Platform

Excellent for visibility;
less coverage for others (tender, invoice, rating).
Carrier latest APIs may be not be available.
New connections or customizations may not be available

**EDI only is rarely sufficient. Middleware is difficult to staff and manage.
iPaaS users are developers not logistics specialists.
Network match is key to success with visibility providers.**



Integration Solutions Don't Handle Every Document

Shippers, 3PLs and Carriers have multiple integration solutions deployed in their tech stack and still find there is an integration capability gap.

EDI + API + Visibility DOES NOT EQUAL
100% Connectivity



Coverage by Integration Product Type

The next section compares integration types to typical EDI and API data exchange. Use this information to identify gaps and best-fit for purpose products.

Logistics Integration Coverage Matrix

Data Exchange	Legacy EDI	Middleware / ESB	iPaaS	Networks / RTTVP
Rating	▲	▲	☑	▲
Tender (204/990)	☑	▲	☑	▲
eBOL	▲	▲	▲	☑
Status (214)	☑	▲	☑	☑
Invoice (210)	☑	▲	☑	▲
POD	▲	▲	▲	☑
Weight Docs	▲	▲	▲	▲

☑ = Supported out-of-the-box

▲ = Partial. Custom build required

Recommendations by Type of Exchange

Best Fit by Type

- **Legacy EDI**
 - Strong for Tender (204/990), Invoice (210), and Status (214); weak for eBOL, POD, Weight.
- **Middleware / ESB**
 - Technically supports all docs but always custom build; recommended only in multi-system ERP/TMS/WMS orchestration.
- **iPaaS**
 - Balanced approach. Wide variability by vendor. May not support Logistics integrations out-of-the-box
- **Networks / Visibility Provider**
 - Strong for real-time Status, POD, eBOL visibility. Tender and Rating flows now available through new AI-based features - upcharge applies.

Recommendations



The only Logistics Integration solution that tackles every type of integration and doesn't require developers is 1Logtech.

Use 1Logtech to solve multi-step integrations, fill solution gaps in your tech stack and accelerate onboarding.

TIP: Add 1Logtech to your stack to get complete coverage for every type of data and document exchange.

Logistics Integration Coverage Matrix with 1Logtech

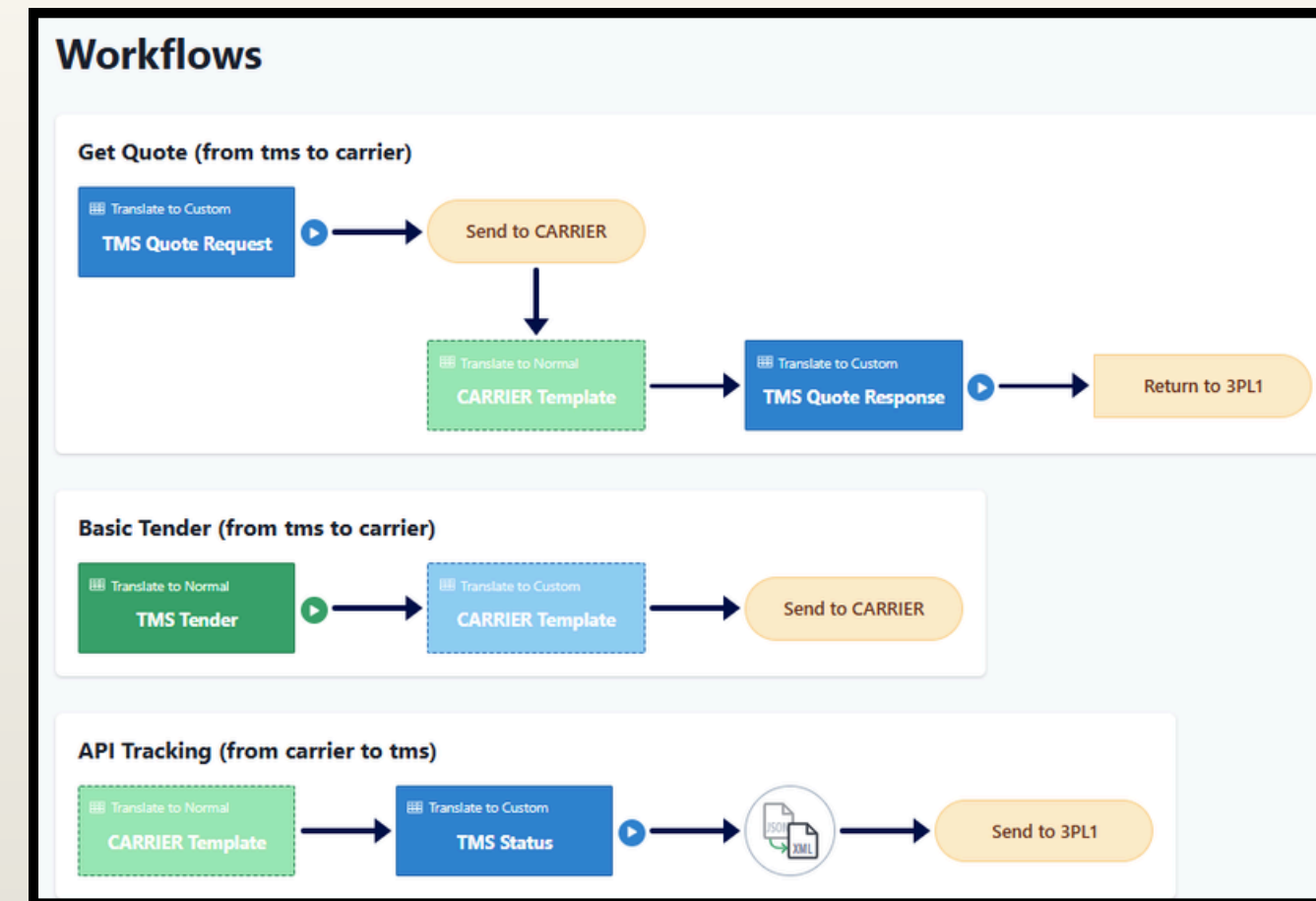
Data Exchange	Legacy EDI	Middleware / ESB	iPaaS	Networks / RTTVP	1Logtech
Rating	△	△	✓	△	✓
Tender (204/990)	✓	△	✓	△	✓
eBOL	△	△	△	✓	✓
Status (214)	✓	△	✓	✓	✓
Invoice (210)	✓	△	✓	△	✓
POD	△	△	△	✓	✓
Weight Docs	△	△	△	△	✓

 = Supported out-of-the-box
 = Partial. Custom build required

Make 1Logtech Your logistics integration platform

Choose 1Logtech to

- Optimize your Tech Stack
 - Fill a Integration Gap. Affordable & Fast
 - Retire visibility products. Connect every carrier & save
- Accelerate Projects
 - Quickly Connect Carriers. Easily switch from EDI to API
 - No developers needed
 - Eliminate backlogs. Onboard faster.



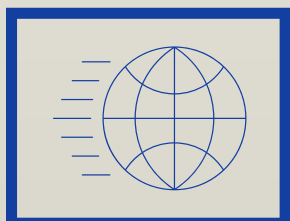
Configure, Don't Code.

Like a Report Writer for Logistics Integration, it's easy and simple to integrate partners with 1Logtech

CONTACT US

info@1Logtech.com

www.1Logtech.com



1Logtech

